



PLAZA CORT PENTHOUSE

OLD TOWN. PALMA

OLD TOWN RENEWAL.

A high-impact space occupying a prime spot above Plaza de Cort, the penthouse has been ingeniously renovated to embrace architectural contrast and transform an existing city structure into a vibrant example of modern sustainable living.



Architect: Vidal
Builder: Ferratur
Developer: Swiss Project Group

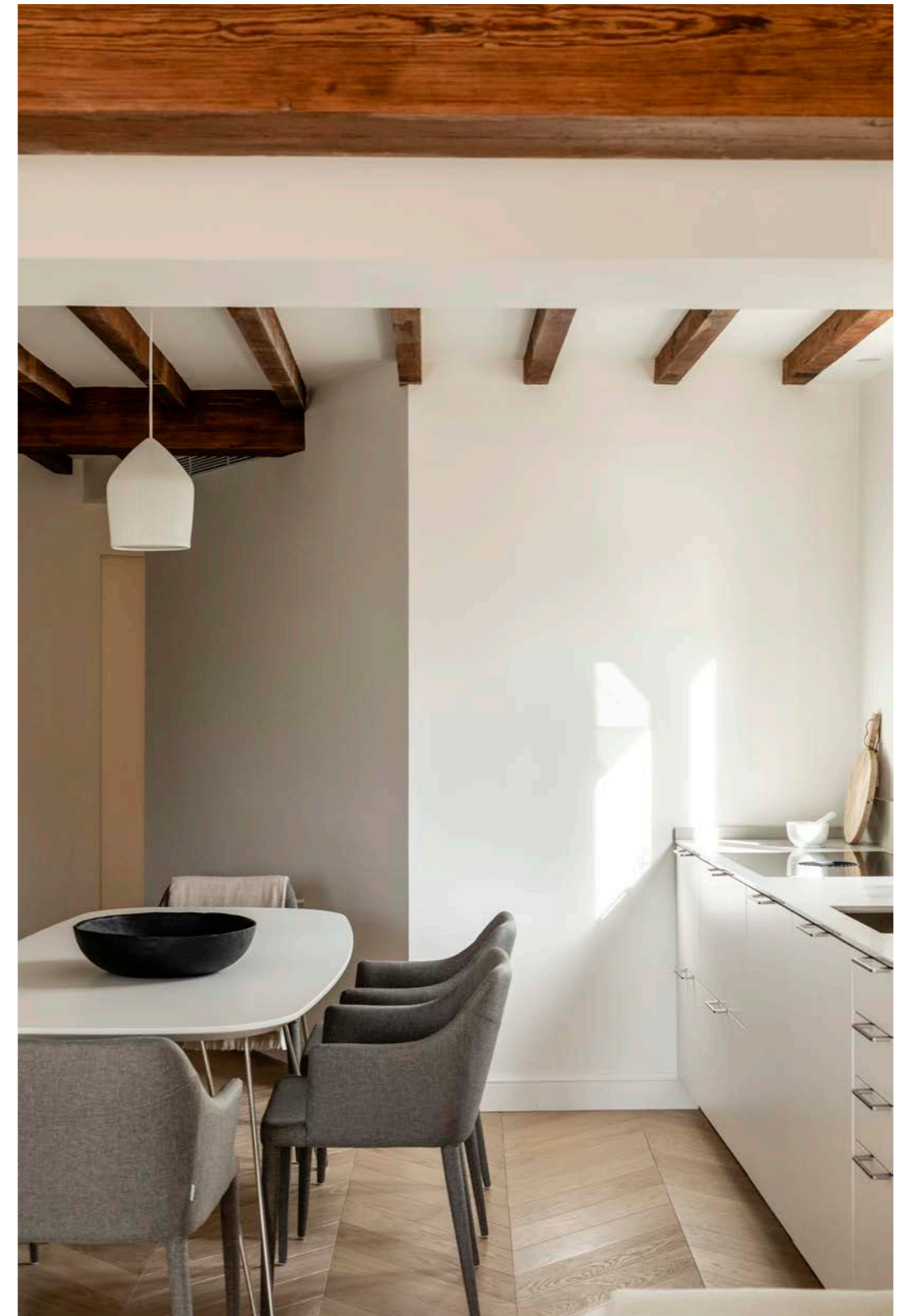
Cleverly maximising a modest space, the interior has been tastefully reimagined by renowned architects Rafael and Maria Vidal and brought to life by leading Balearic builder Ferratur to deliver a smart combination of old and new - a hidden retreat packed with creature comforts designed for rest and relaxation, satisfyingly removed from the daily buzz below.

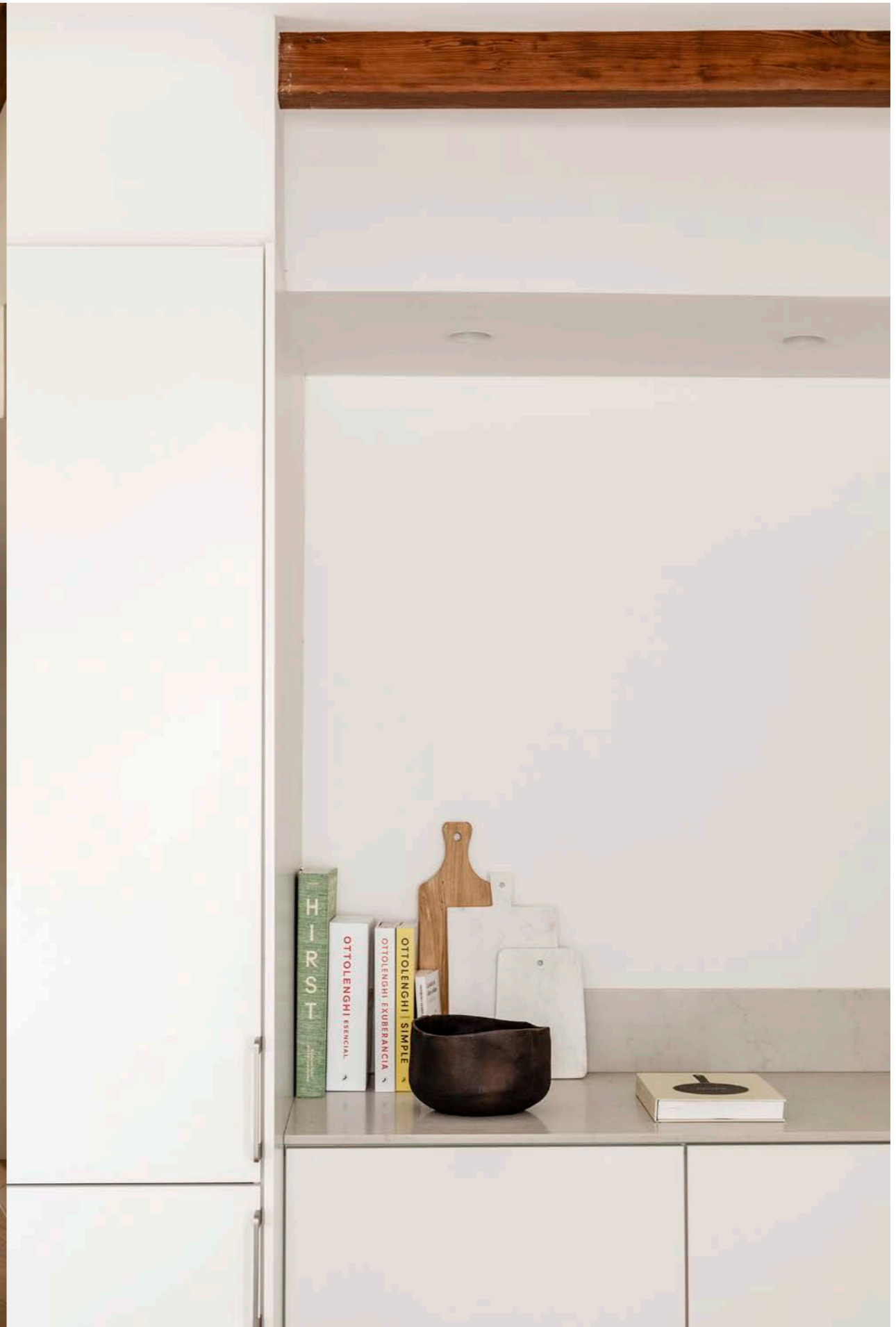
With a passion to preserve, the experienced design team have repurposed and enhanced this historic building with a cool composure using a palate of natural materials to honour its past. The long, original staircase transports you to a private, elevated bolthole at the highpoint of this unpretentious landmark. Make it to the top, take a breath and you'll find a quality, design-led aesthetic throughout that hints at an ambitious restoration project undertaken with longevity, creative reuse, sustainability and contentment in mind.

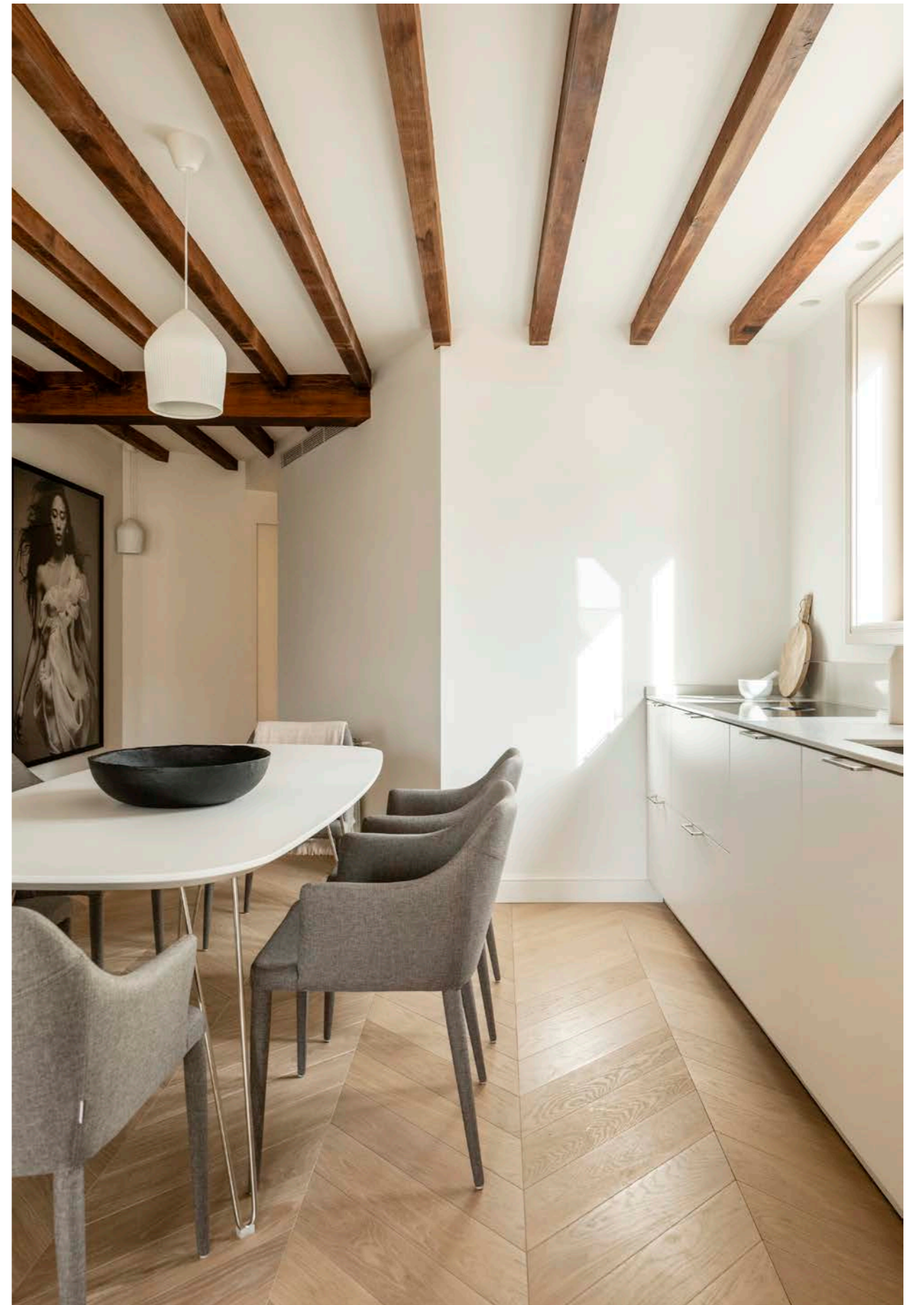
Light wood chevron floors set the scene whilst the original wooden beams help to preserve a rich sense of history. There's 1 main bedroom, 1 guest bedroom plus a generous terrace for al fresco dining outside. Enjoy an open-plan, serene living area with sleek, modern white kitchen equipped with Siemens appliances, a spacious lounge and rooftop terrace perfect for enjoying the soul of Palma. In the bathroom, natural limestone compliments custom made furniture by Canellas. Professional soundproofing features throughout.

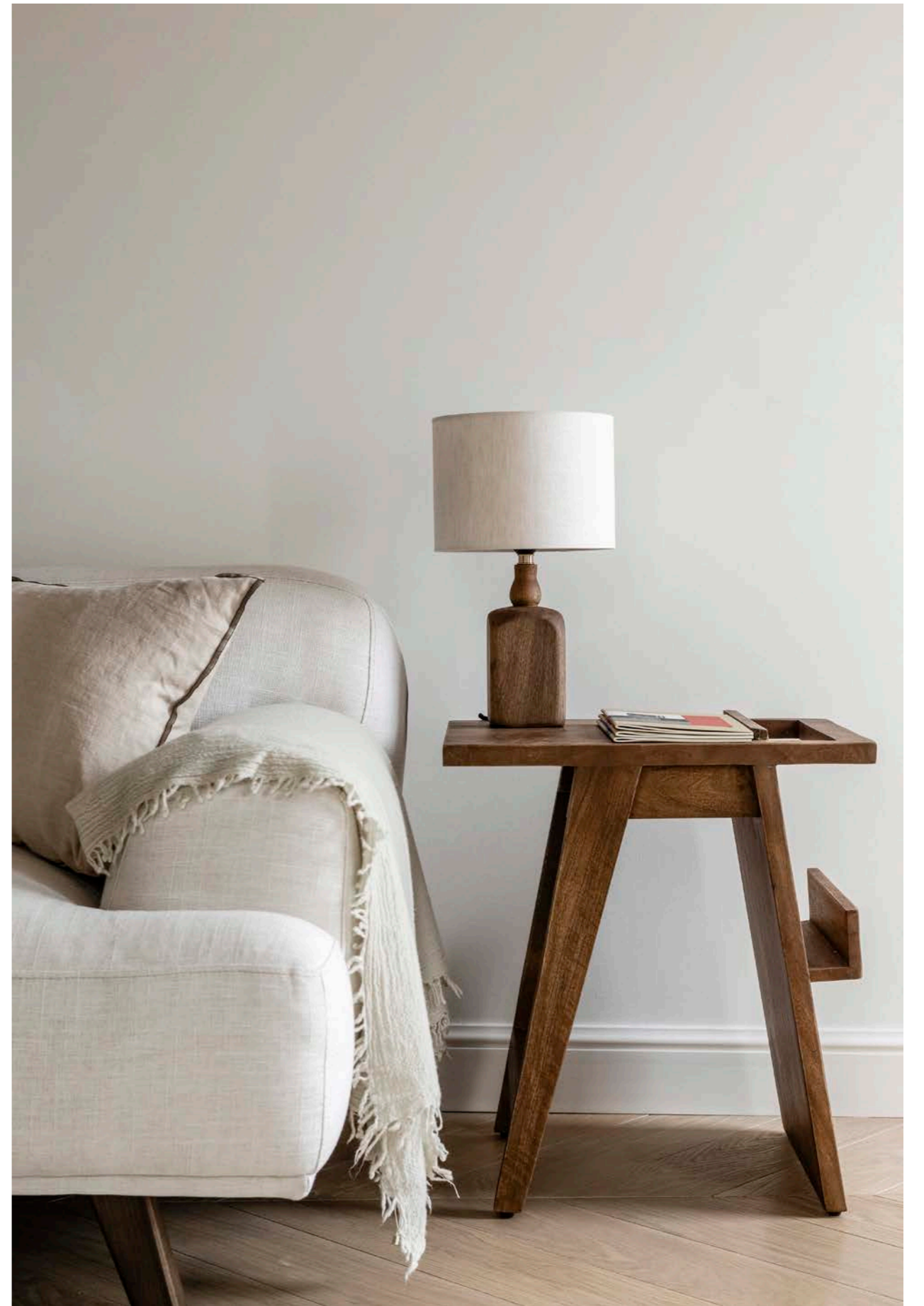
City life plays out below you hour by hour. Plaza de Cort is a renowned, historic square in Palma's old town famous for its ancient olive tree and home to Hotel Cappuccino, Cartier and an abundant and eclectic mix of cool cafes and restaurants. The nearest beach is just a five-minute taxi ride away.

Plaza de Cort penthouse is a restoration project for the open minded; a perfectly positioned luxury retreat in the centre of town charged with a new energy.

















GENERAL SPECIFICATION

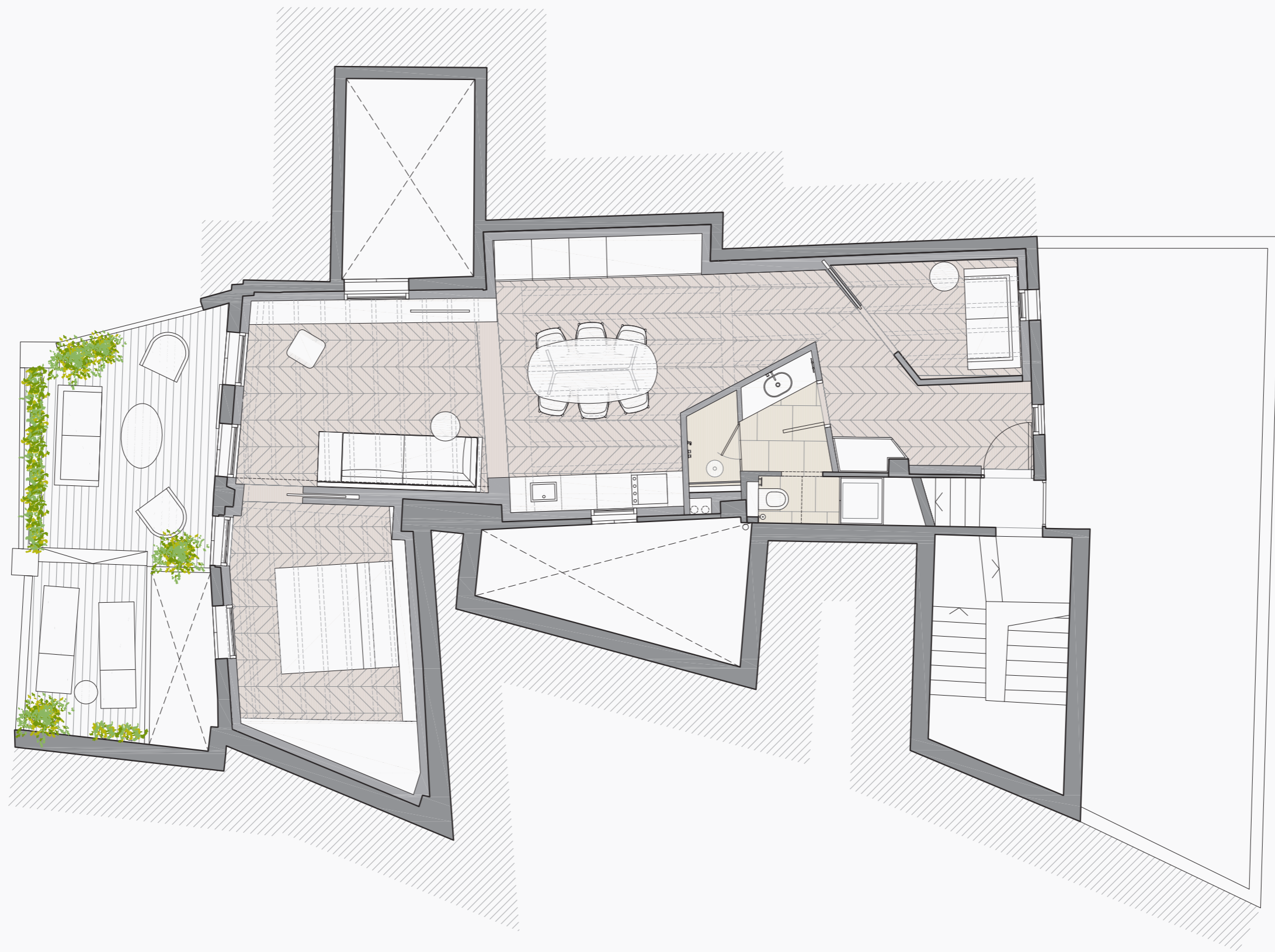
2 BEDROOMS / 1 BATHROOM
ENTRANCE HALL / KITCHEN LIVING AREA WITH OPEN SPACE / LAUNDRY
TOTAL CONSTRUCTED AREA INCL. TERRACE APPROX 100 (98,61 SQM)
TERRACE. 20,48 SQM / INTERIOR. 78,13 SQM

VALUE. 997 911€

FURNITURE, DECORATION & ART NOT INCLUDED

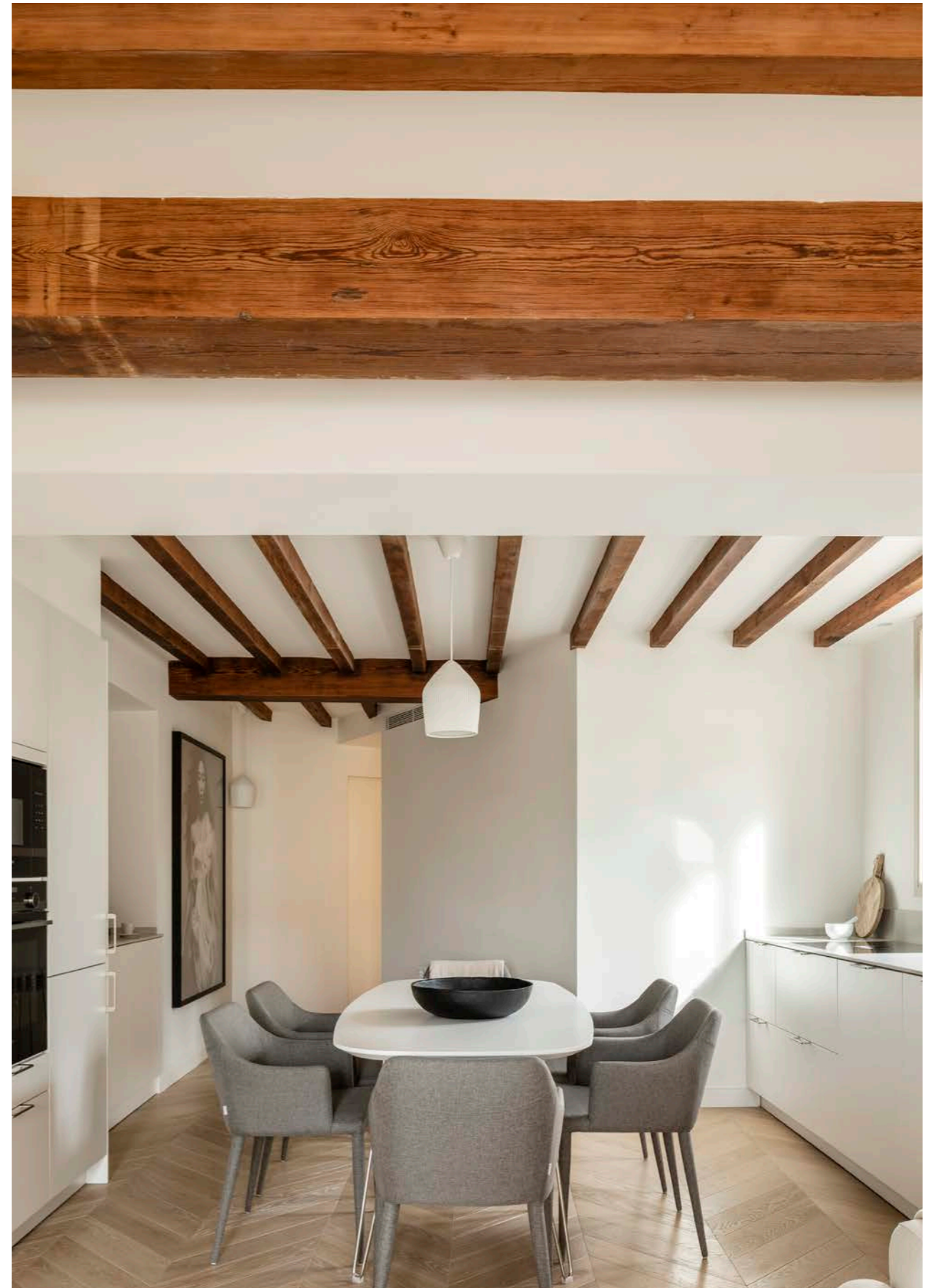
SIEMATIC KITCHEN / SIEMENS APPLIANCES / VOLA TAPS / DURAVIT SANITARI / GRIS SARZI STONE + CUSTOM MADE FURNITURE IN
BATHROOMS BY CANELLAS / CUSTOM OAK CHEVRON WOODEN FLOOR / IPE DECK IN TERRACE / CUSTOM MADE LINEN CURTAINS /
PANASONIC AC SYSTEM / ARISTON AEROTERMIA MACHINE FOR HOT WATER / QUALITY RADIATORS FOR HEATING / SATO CUSTOM LIGHTING
IN CEILINGS BETWEEN THE BEAMS / JUNG SWITCHERS / FLOS LIGHTING / UNIQUE DECORATION & DESIGN FURNITURE






ARCHITECTURE & INTERIOR SPEC
BY RAFAEL AND MARIA AT VIDAL ARCHITECTS
Renowned for their successful projects on Mallorca including;
Palma Tennis Club; Portixol Hotel; Palma Town House; Villa
Calatrava & many independent, unique private residences.

ALL WOODEN WORKS
New windows, doors, terrace doors: hand made custom by Canellas
- one of the finest carpenters on Mallorca.





AN HISTORIC ORIGINAL.
PRESENTED BY SWISS PROJECT GROUP