

A high-angle, close-up photograph of a white hat with a gold band resting on a white table. In the foreground, two glasses of wine sit on a light-colored wooden table. The scene is bathed in warm, golden light, creating soft shadows. The text 'CASA de les FLORES' is centered in the middle of the image.

CASA
de les
FLORES





**CASA DE LES FLORES
A MODERN CLASSIC**

/

THE VILLA'S HOLISTIC AESTHETIC SITS IN PERFECT HARMONY WITH ITS SURROUNDINGS. A STRIKING AND WELCOMING PIECE OF ARCHITECTURE, THE SPLIT-LEVEL DESIGN HAS CREATED A PRIVATE RETREAT BOTH SPACIOUS AND MODERN IN FEEL.

DEFINED BY CLASSIC PROPORTIONS, CASA DE LES FLORS BOASTS 5 SUITES, PLUS AN ELEVATED TERRACE WITH OCEAN VIEWS OVERLOOKING A PERFECTLY PROPORTIONED GARDEN COMPLETE WITH SWIMMING POOL. STEP OUTDOORS INTO A GREEN AND RELAXING SPACE WITH CALM AND SHADED SPOTS PERFECT FOR SHARING.

ENJOY OPEN PLAN LIVING AT ITS BEST; A CONTEMPORARY SPACE INFUSED WITH TIMELESS ELEGANCE - THERE'S FLUIDITY AND CONSISTENCY THROUGHOUT THE HOUSE. THE MODERN CUSTOM KITCHEN WITH MIELE APPLIANCES SITS AT THE CENTRE OF A SPACIOUS LIVING AND DINING AREA WITH FULL HEIGHT GLASS PATIO DOORS FRAMING SEDUCTIVE GARDEN VIEWS.

LIGHT OAK HERRINGBONE FLOORS AND A FEATURE STAIRCASE COMPLIMENT AN ARRAY OF BESPOKE CARPENTRY ACROSS THE PROPERTY. UNDERFLOOR HEATING, CUSTOM LIGHTING, PRIVATE ELEVATOR, BESANA CARPETS AND A TECHNICS AUDIO SYSTEM ADD TO THE MIX. WARM TEXTURES AND A REFINED DESIGN STYLE HELP TO CREATE A SENSE OF CALM THROUGHOUT. TRUSTED HIGH-END BRAND PARTNERS INCLUDE POLIFORM, GAGGENAU, RODA, GIOPATO & COOMBES AND KONE.

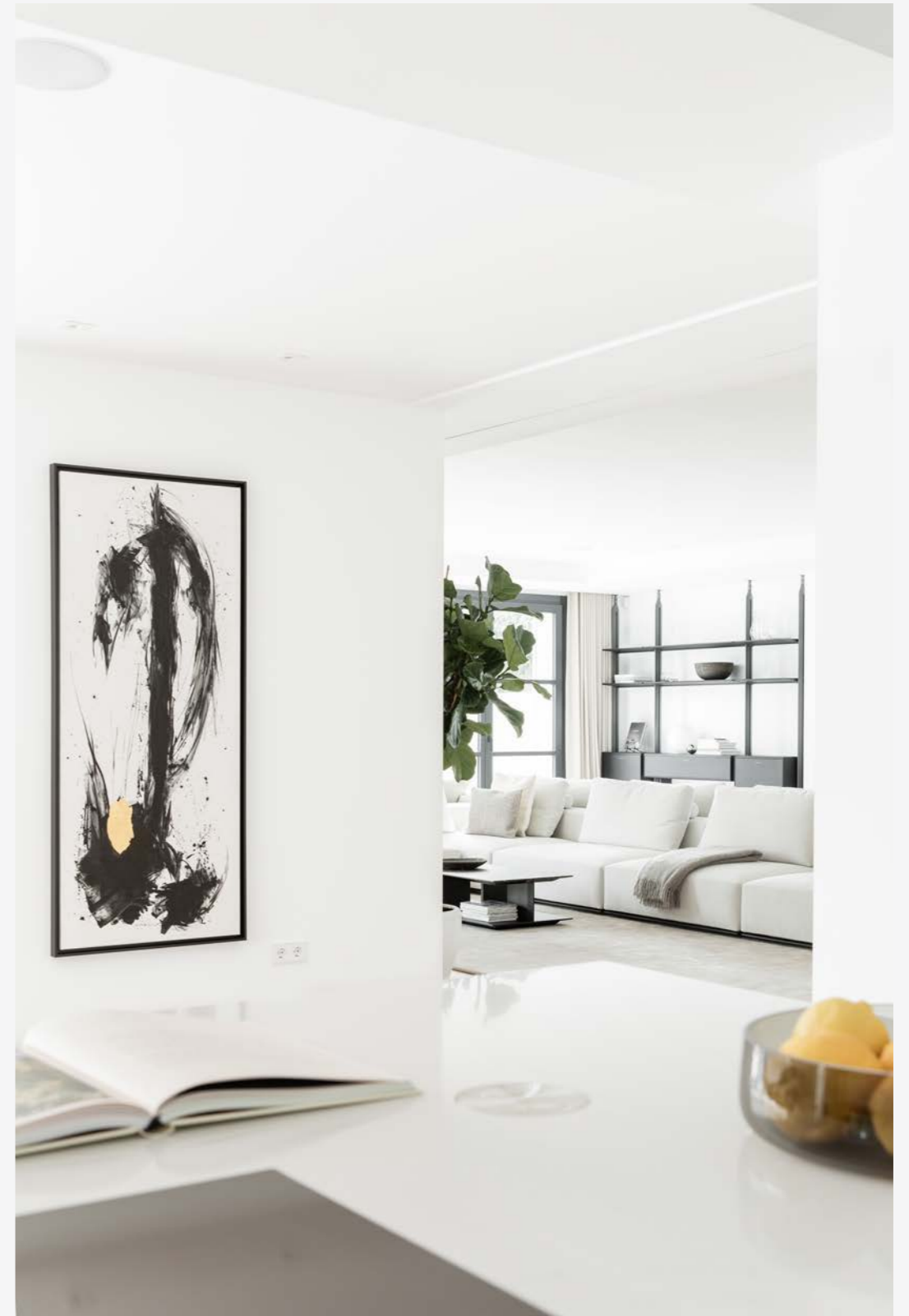
FLOODED WITH NATURAL LIGHT, THIS IS AN INCREDIBLE PROPERTY AND LOCATION FOR YEAR ROUND LIVING. THERE'S A STYLISH POOL, POOL HOUSE, TERRACE, PRIVATE GARDEN AND FIREPLACES INSIDE AND OUT. THE RESTAURANTS, BARS AND BOUTIQUES OF PUERTO PORTALS MARINA ARE WITHIN WALKING DISTANCE AS IS THE PINE GROVE BORDERED BEACH AND RENOWNED 18 HOLE GOLF COURSE AT OLD BENDINAT.



















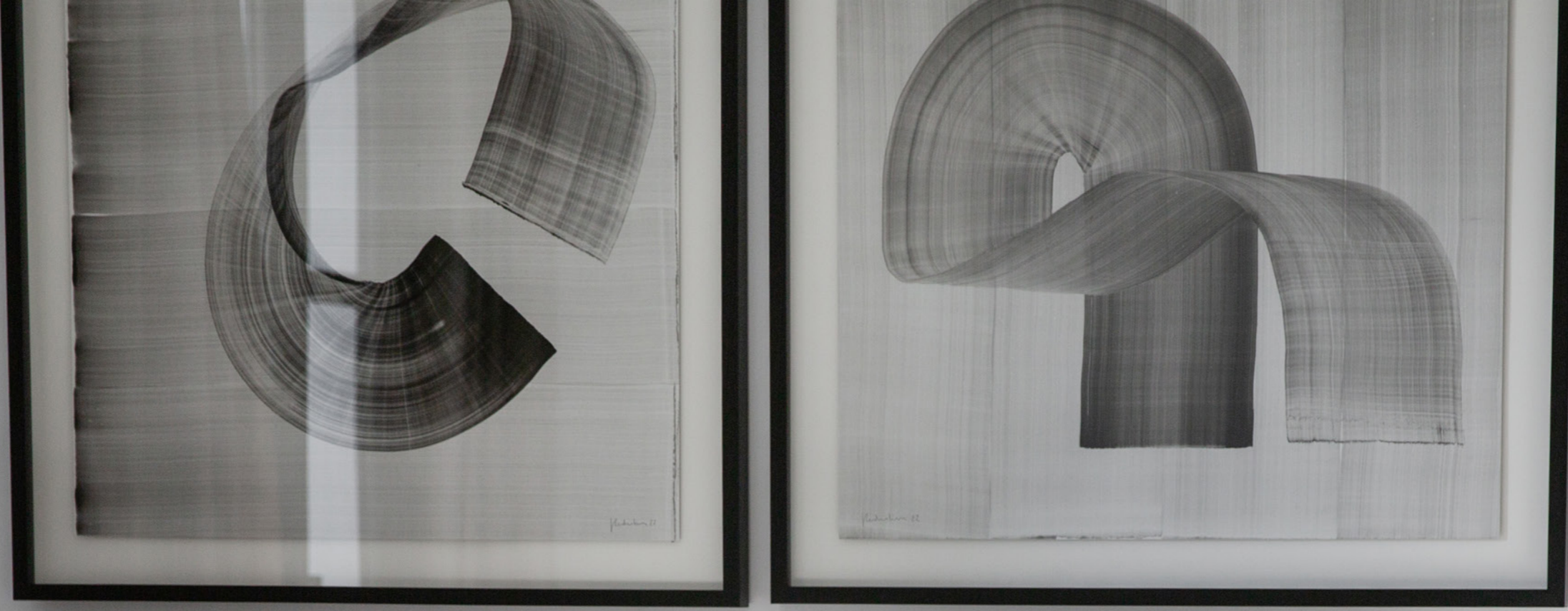










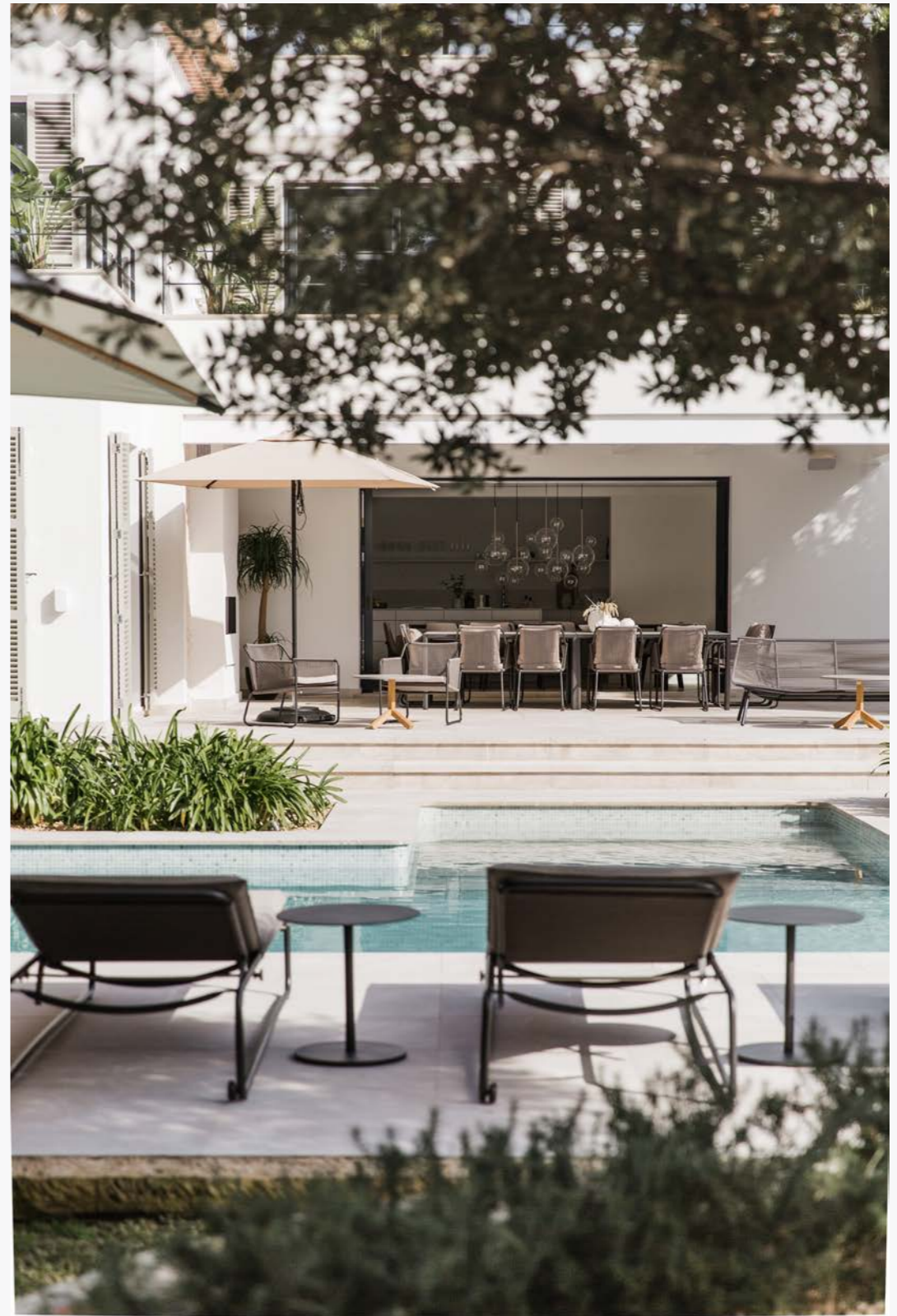




STEP OUTSIDE_





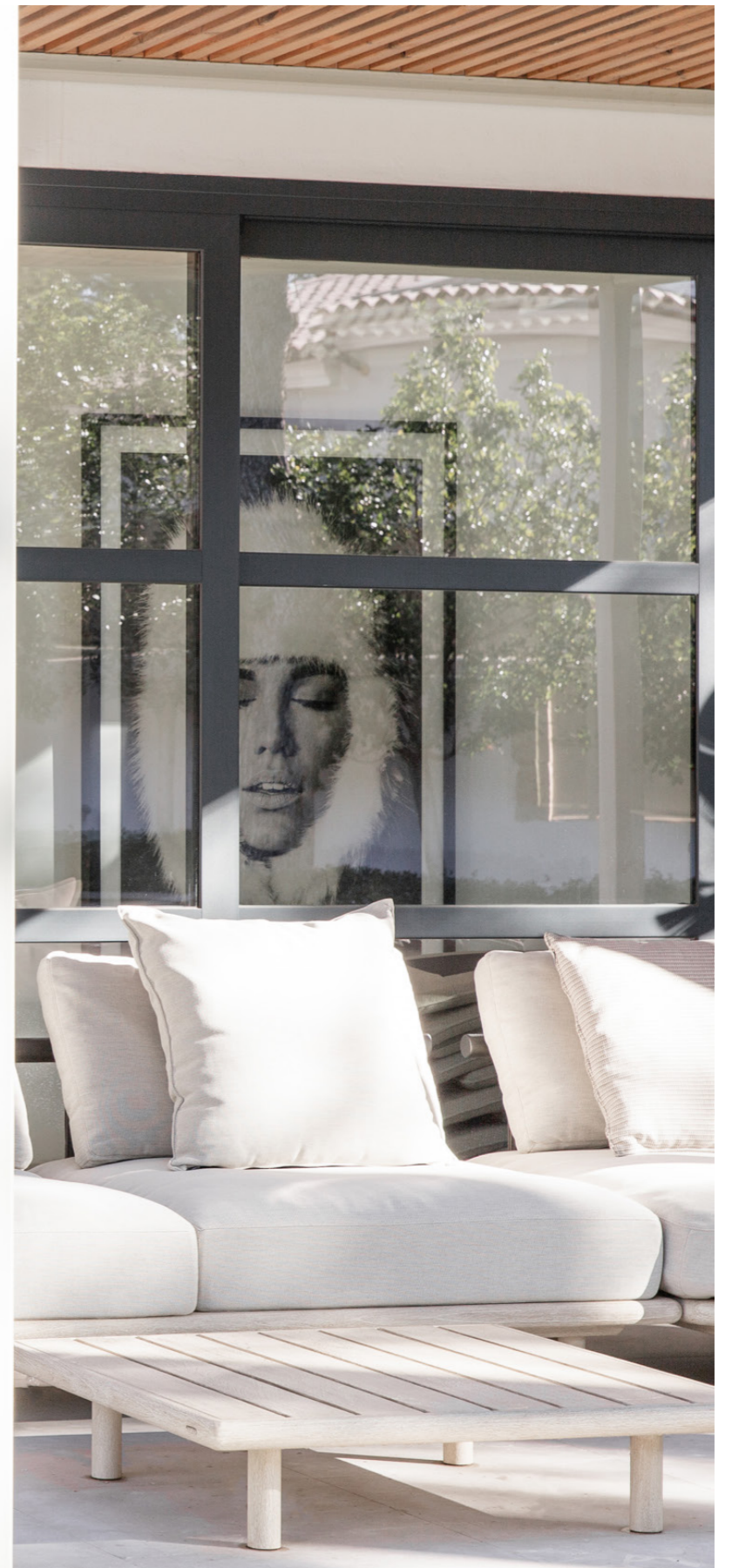


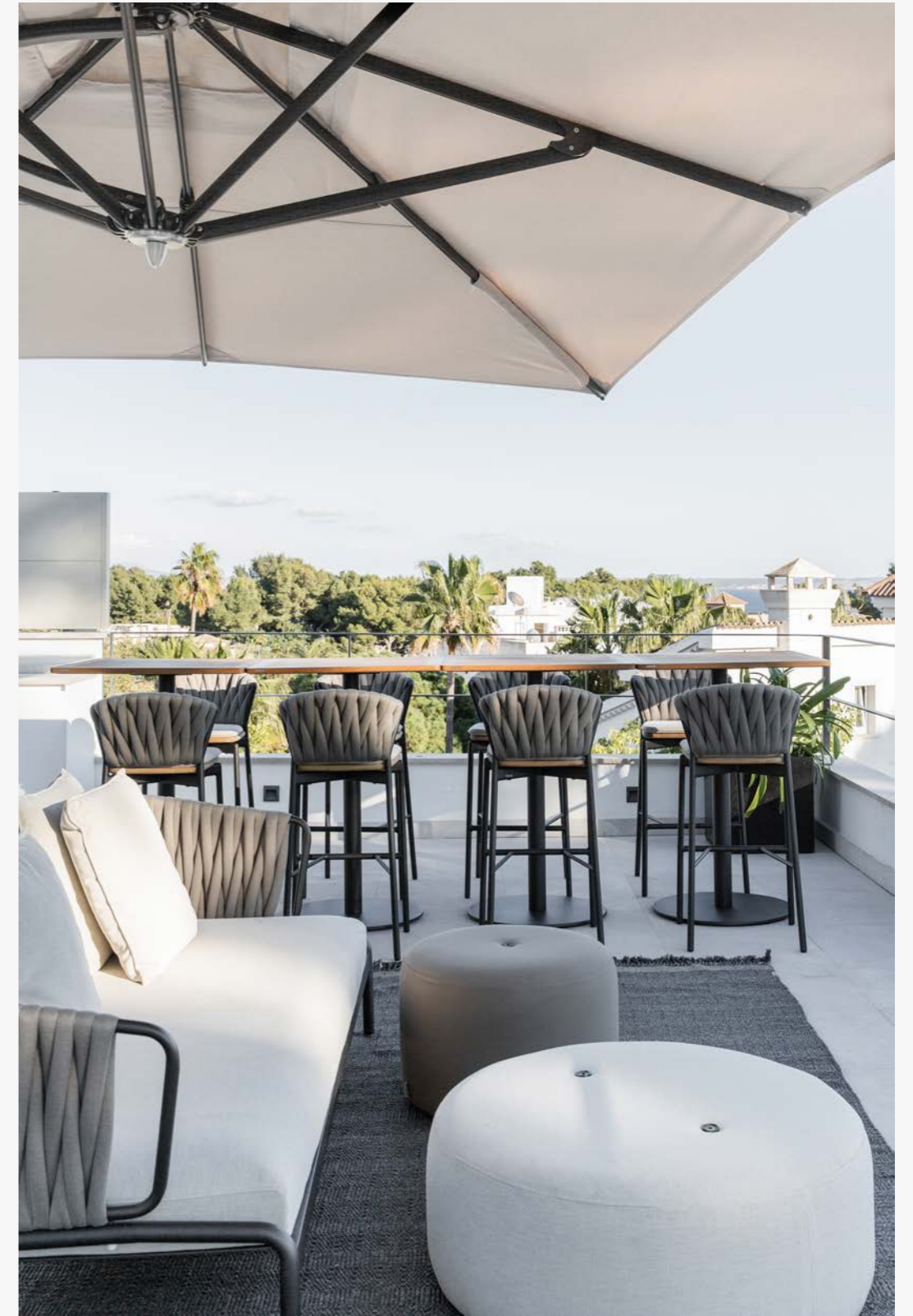














SPECIFICATION

/

AMAZING GARDEN, POOL & SEA-VIEWS

PLOT. 1604 SQM

LIVING SPACE, VILLA & TERRACES 640 SQM

(INTERIOR 420 + 220)

GROUND FLOOR OPEN PLAN LIVING AREA + 5 SUITES

VALUE 9.250 000€

TO INCLUDE INTERIOR & EXTERIOR FURNITURE & DECORATIONS

(ART COLLECTION NOT INCLUDED)

BRANDS_

KONE PRIVATE ELEVATOR / SIE-MATIC CUSTOM KITCHEN / GAGGANEAU & MIELE ELECTRIC APPLIANCES
CHIMNEY INTERIOR & EXTERIOR / UNDERFLOOR HEATING THROUGHOUT / BUILT IN AC SYSTEM / BUILT IN QUALITY MUSIC SYSTEM
POLIFORM INTERIOR DESIGN, CUSTOM DETAILS & FURNITURES / RODA EXTERIOR FURNITURE / TUUCI EXTERIOR UMBRELLAS
GIOPATO & COOMBES CUSTOM DECORATION LIGHTING / FLOS LIGHTING / BESANA CUSTOM MADE QUALITY CARPETS

